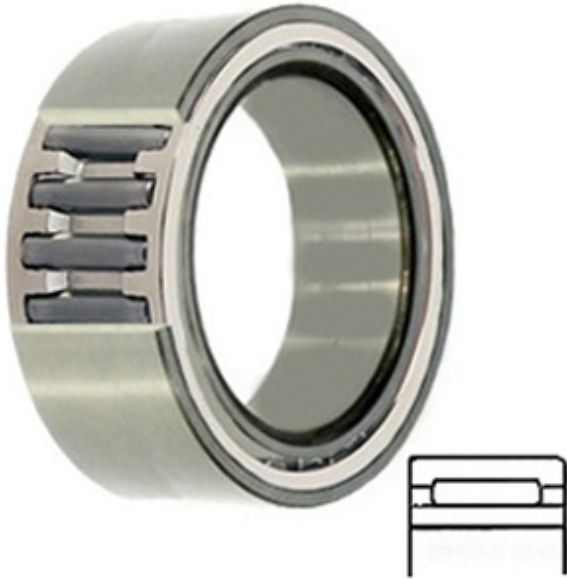




BEARING MFG. CORP.



NA-4856 Bearing 2D drawings and 3D CAD models

11.024 Inch | 280 Millimeter x 13.78 Inch | 350
Millimeter x 2.717 Inch | 69 Millimeter
**CONSOLIDATED BEARING NA-4856 Needle
Non Thrust Roller Bearings**

Bearing No. NA-4856

Category	Needle Non Thrust Roller Bearings
Inventory	0.0
Manufacturer Name	CONSOLIDATED BEARING
Minimum Buy Quantity	N/A
Weight	16.74
EAN	0644075078122
Product Group	B04144
Rolling Element	Needle Roller Bearing
Component	Complete with Outer and Inner Ring
Enclosure	Open
Self Aligning	No
Retainer	Yes
Number of Rows of Rollers	Single Row
Separable	Inner Ring - Both Sides
Closed End	No
Inch - Metric	Metric
Relubricatable	Yes
Thrust Bearing	No
Long Description	280MM Bore; 350MM Outside Diameter; 69MM Width; Needle Roller Bearing; Complete with Outer and Inner Ring;



BEARING MFG.CORP.

	Open Enclosure; No Self Aligning; Retainer; Single Row of Rollers; Inner Ring - Both Sides Se
Other Features	Plain Inner Ring 2 Rib Outer Ring Oil Hole
Category	Needle Non Thrust Roller Bearing
UNSPSC	31171512
Harmonized Tariff Code	8482.40.00.00
Noun	Bearing
Keyword String	Needle
Manufacturer URL	http://www.consbrgs.com
Manufacturer Item Number	NA-4856
Weight / LBS	36.87
B	2.717 Inch 69 Millimeter
D	13.78 Inch 350 Millimeter
d	11.024 Inch 280 Millimeter