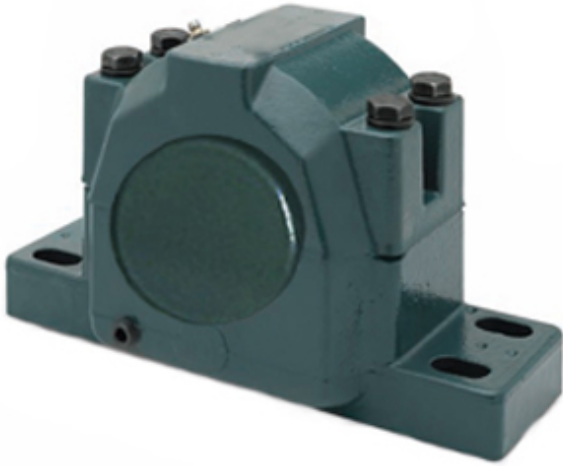




BEARING MFG. CORP.



CP4B520-USAFA-307TT Bearing 2D drawings and 3D CAD models

3.438 Inch | 87.325 Millimeter x 6.781 Inch |
172.237 Millimeter x 4.5 Inch | 114.3 Millimeter
DODGE CP4B520-USAFA-307TT Pillow Block
Bearings

Bearing No. CP4B520-USAFA-307TT

Category	Pillow Block Bearings
Inventory	0.0
Manufacturer Name	ABB MOTORS AND MECHANICAL INC
Minimum Buy Quantity	N/A
Weight	37.9
EAN	0782475769872
Product Group	M06288
Number of Mounting Holes	4
Mounting Method	Adapter Sleeve
Housing Style	4 Bolt Pillow Block
Rolling Element	Spherical Roller Bearing
Housing Material	Cast Iron
Expansion / Non-expansion	Non-expansion
Mounting Bolts	3/4 Inch
Relubricatable	Yes
Insert Part Number	BRG22220KC3
Seals	Triple Tect
Housing Configuration	2 Piece Split
Inch - Metric	Inch
Other Features	Double Row Closed End Corrosion Resistant
Long Description	4 Bolt Pillow Block; 3-7/16" Bore; 4-1/2" Base to Center Height; Adapter Sleeve



BEARING MFG. CORP.

	Mount; Spherical Roller Bearing; 11-5/8" Minimum Bolt Spacing; 13-1/8" Bolt Spacing Maximum; Relubri
Category	Pillow Block
UNSPSC	31171511
Harmonized Tariff Code	8483.20.40.80
Noun	Bearing
Keyword String	Pillow Block
Manufacturer URL	http://www.dodge-pt.com
Manufacturer Item Number	CP4B520-USAF-307TT USAF
Manufacturer Internal Number	039596
Weight / LBS	65.9
Bolt Spacing Maximum	13.125 Inch 333.375Millimeter
B	4.5 Inch 114.3 Millimeter
Nominal Bolt Center to Center	12.1 Inch 308.5 Millimeter
D	6.781 Inch 172.237 Millimeter
Actual Bolt Center to Center	0 Inch 0Millimeter
d	3.438 Inch 87.325 Millimeter
Bolt Spacing Minimum	11.625 Inch 295.275Millimeter