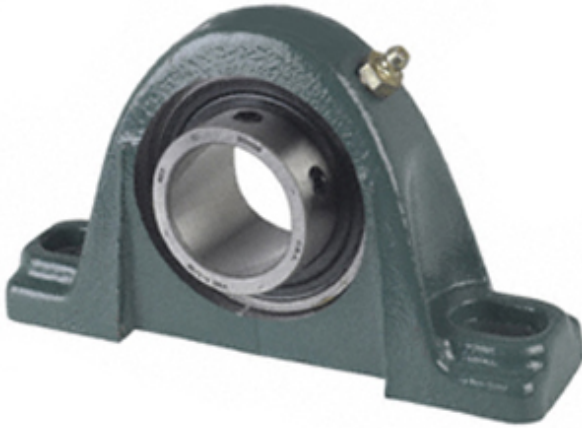




BEARING MFG. CORP.

1.75 Inch | 44.45 Millimeter x 1.937 Inch | 49.2
Millimeter x 2.125 Inch | 53.98 Millimeter HUB
CITY PB251HW X 1-3/4 Pillow Block Bearings



PB251HW X 1-3/4 Bearing 2D drawings and 3D CAD models

Bearing No. PB251HW X 1-3/4

Category	Pillow Block Bearings
Inventory	0.0
Manufacturer Name	REGAL BELOIT
Minimum Buy Quantity	N/A
Weight	1.814
EAN	0662798250601
Product Group	M06110
Number of Mounting Holes	2
Mounting Method	Set Screw
Housing Style	2 Bolt Pillow Block
Rolling Element	Ball Bearing
Housing Material	Cast Iron
Expansion / Non-expansion	Non-expansion
Mounting Bolts	1/2 Inch
Relubricatable	Yes
Insert Part Number	YW250
Seals	Nitrile Rubber
Housing Configuration	1 Piece Solid
Inch - Metric	Inch
Other Features	Single Row Spherical High Base Wide Inner Race Has Trash Guard
Long Description	2 Bolt Pillow Block; 1-3/4" Bore; 2-1/8" Base to Center Height; Set Screw Mount; Ball Bearing; 5-5/16"



BEARING MFG.CORP.

	Minimum Bolt Spacing; 6-3/16" Bolt Spacing Maximum; Relubricatable; Cast Iron
Category	Pillow Block
UNSPSC	31171511
Harmonized Tariff Code	8483.20.40.40
Noun	Bearing
Keyword String	Pillow Block
Manufacturer URL	http://www.hubcityinc.com
Manufacturer Item Number	1001-05069
Manufacturer Internal Number	25060
Weight / LBS	4.2
Actual Bolt Center to Center	0 Inch 0Millimeter
d	1.75 Inch 44.45 Millimeter
B	2.125 Inch 53.98 Millimeter
D	1.937 Inch 49.2 Millimeter
Bolt Spacing Minimum	5.313 Inch 134.95Millimeter
Bolt Spacing Maximum	6.188 Inch 157.175Millimeter
Nominal Bolt Center to Center	5.8 Inch 146.5 Millimeter